



HP and IKAN MetaSuite Test Data Management

Generate test data with reduced delays and costs

MetaSuite can be used for a variety of tasks, ranging from simple data extractions to complex data migration projects. One of its major assets is the ability to generate representative test samples that can be masked.

Solution benefits

- Reduced delays for extracting large amounts of test data
- Guaranteed data privacy and security
- Wide variety of data input and output types
- Accelerated application testing
- Reduced storage and handling costs

Integration highlights

- Generate and mask test data
- Supports all types of sources including mainframe

Benefits of MetaSuite Test Data Management and HP ALM integration

MetaSuite complements HP Quality Center Enterprise by adding the ability to generate test data. It allows creating subsets of data by using powerful sampling techniques. The use of production data for testing purposes involves privacy-related legal issues. MetaSuite comes with predefined masking functions, but also allows you to define your own custom masking functions. The implementation of proper test data management avoids direct business losses as the violation of privacy laws can not only lead to huge fines, but also to reputation damage. The generation of test data is a recurring process. Once this process is automated and standardized, creating test data will be a simple execution of an existing procedure. The sampling functionality reduces the storage space needed and also diminishes the associated time and management cost of handling large volumes of test data.

How the integration works

1. Collect the data using MetaStore.
2. Create the Mapping Rules between the data sources and targets using MetaMap, or by using the Test Data Wizard, which creates, transforms, and masks test data in a few simple steps.
3. Generate and run the model using the Generator Manager. The data sources will be transformed according to the defined rules.
4. The resulting output can be used by HP Quality Center as input for testing purposes.

Certification environment

- **Hardware** – Hardware-independent
- **OS** – Microsoft® Windows®, all UNIX flavors, IBM z/OS, Fujitsu BS2000, and others.
- **Software** – Any database, XML, Unicode, and more.

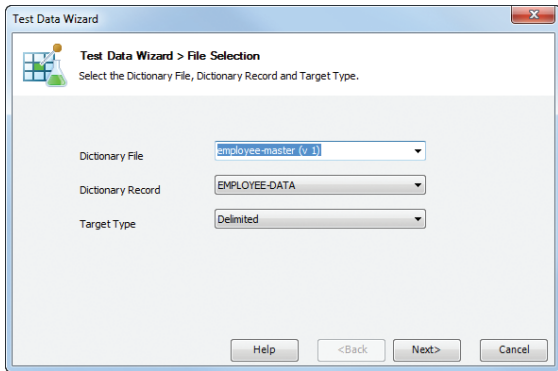


Figure 1. Collect the definitions for the Source and Target Data in the required format.

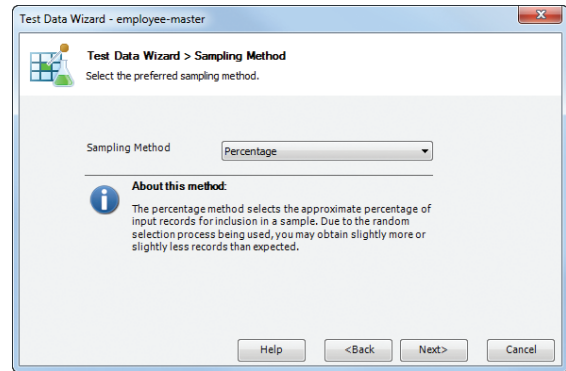


Figure 2. Specify one of the pre-defined sampling routines.

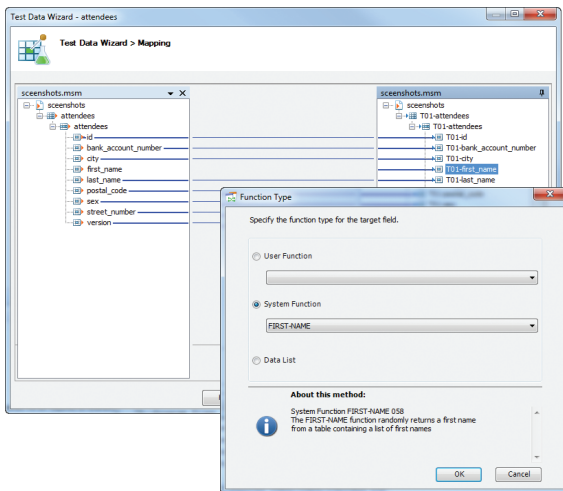


Figure 3. Transform and mask the data using a User or System function. In this case all first names will be replaced with a random first name from an existing list of first names.

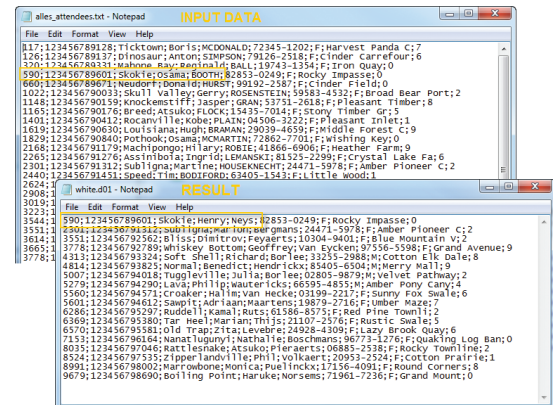


Figure 4. Resulting test data after having specified a sample of 20 percent. Two System functions have been used for masking the first and last names.



About MetaSuite from IKAN Solutions

MetaSuite offers fast time-to-value, scalability, and a rich choice of supported source and target files and database types. MetaSuite can be used to extract, transform, and merge operational data. It can also be used to consolidate and rationalize data and can deliver support for master data management. It also allows generating secure and masked test data based on production data or generic data sets. MetaSuite is an indispensable tool for data migrations, data conversions of replaced legacy applications, data consolidation during mergers and acquisitions, and test data management.

For more information

Visit: metasuite.com
 Email: info@metasuite.com

